

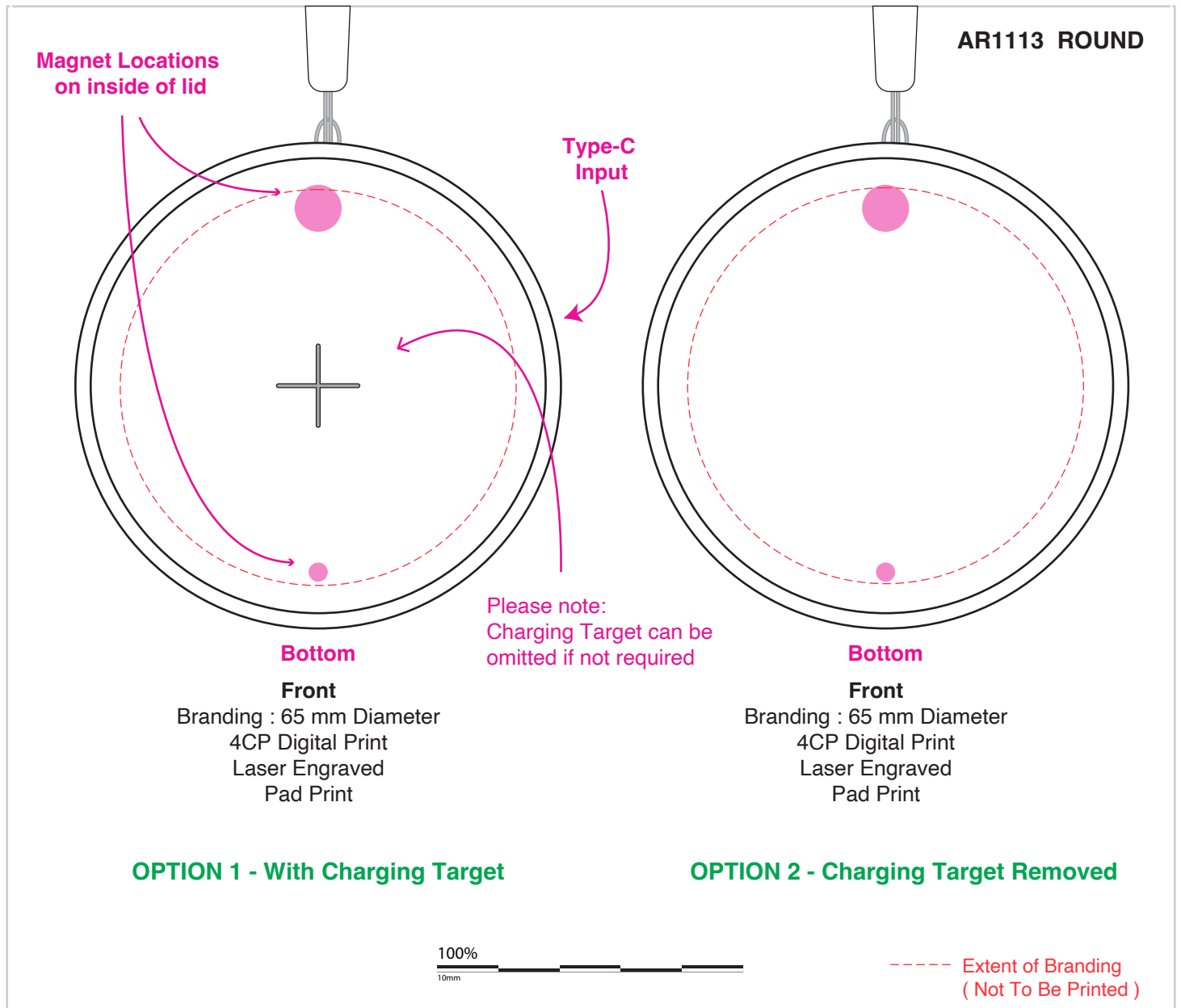
## AR1113

### Boone Eco 15W Wireless Charger and Cable Kit

**Branding Options:** Pad Print, Laser Engraved, 4CP Digital Print

**Product Size:** Case: 80 (dia.) x 16 mm, Cable Length: 265 mm

**Colours:** Product Colour: Bamboo



Please follow these artwork guidelines • Use and supply vector-based artwork • Illustrator compatible EPS or PDF with all fonts outlined • Indicate any necessary colour details with the correct PMS colour • All Pantone colours need to be supplied as Pantone Coated (PMS C) colours • All specifics need to be “embedded” in the file, i.e. no linked artwork should be provided • Bleed is crucial when printing edge to edge. Artwork must extend beyond the finished and trim size dimensions.

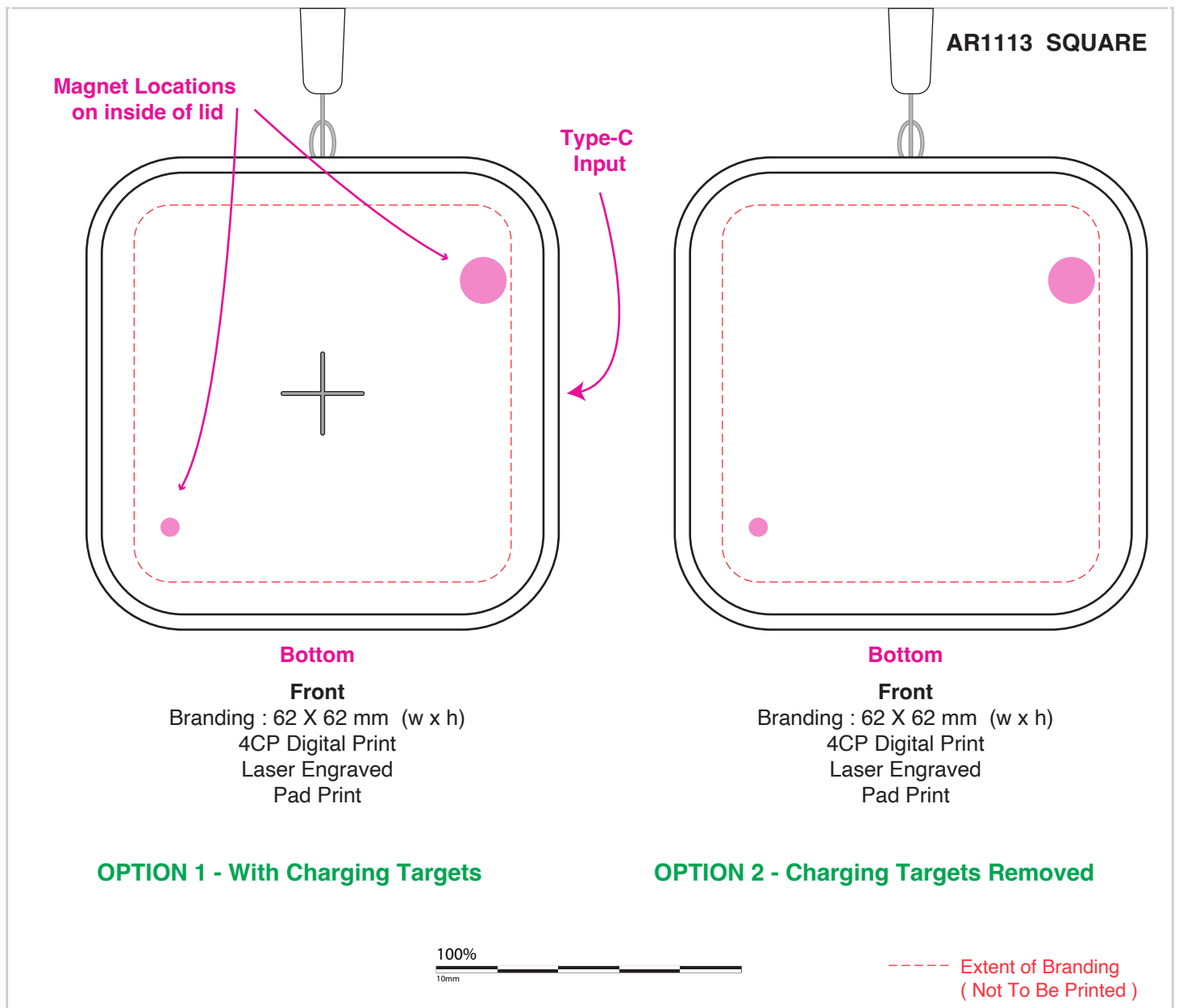
## AR1113

### Boone Eco 15W Wireless Charger and Cable Kit

**Branding Options:** Pad Print, Laser Engraved, 4CP Digital Print

**Product Size:** Case: 80 (dia.) x 16 mm, Cable Length: 265 mm

**Colours:** Product Colour: Bamboo



Please follow these artwork guidelines • Use and supply vector-based artwork • Illustrator compatible EPS or PDF with all fonts outlined • Indicate any necessary colour details with the correct PMS colour • All Pantone colours need to be supplied as Pantone Coated (PMS C) colours • All specifics need to be “embedded” in the file, i.e. no linked artwork should be provided • Bleed is crucial when printing edge to edge. Artwork must extend beyond the finished and trim size dimensions.

## AR1113

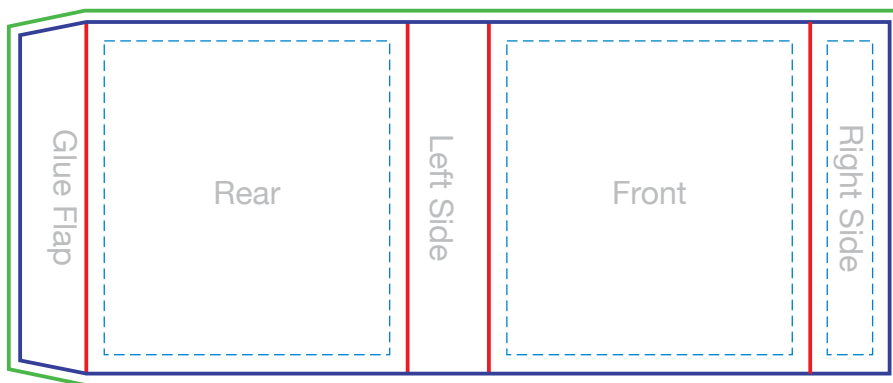
### Boone Eco 15W Wireless Charger and Cable Kit





**Branding Options:** Pad Print, Laser Engraved, 4CP Digital Print

**Product Size:** Case: 80 (dia.) x 16 mm, Cable Length: 265 mm

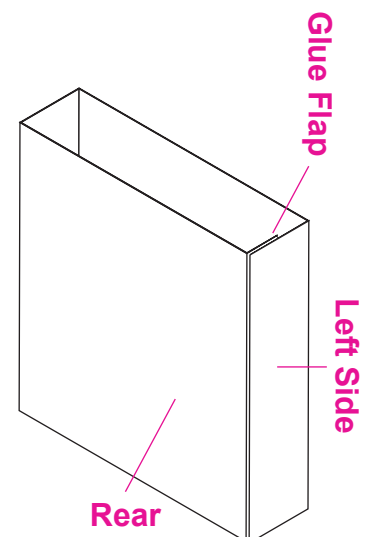
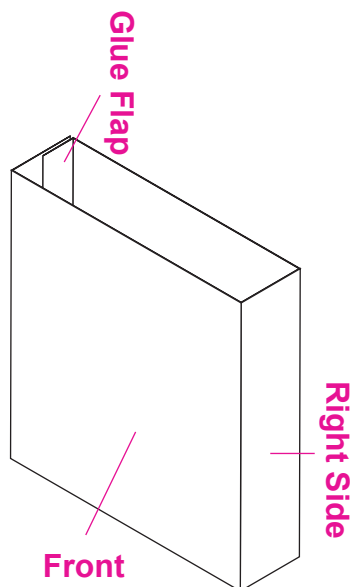
**Colours:** Product Colour: Bamboo

Sleeve @ 50%



Bleed   
Trim   
Crease   
Text / Image Safe 

50%  
10mm



Please follow these artwork guidelines • Use and supply vector-based artwork • Illustrator compatible EPS or PDF with all fonts outlined • Indicate any necessary colour details with the correct PMS colour • All Pantone colours need to be supplied as Pantone Coated (PMS C) colours • All specifics need to be "embedded" in the file, i.e. no linked artwork should be provided • Bleed is crucial when printing edge to edge. Artwork must extend beyond the finished and trim size dimensions.