

**AR879**

**Fierra 3n1 Light Up Charge Cable**

**Print Process:** Light-Up Logo

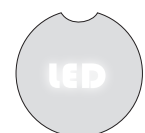
**Product Size:** Cable Head: 38 x 26 mm, Cable Length: 100 cm

**Colours:** Product Colour: Black/Silver & White (LED). Refer to our PDF template.



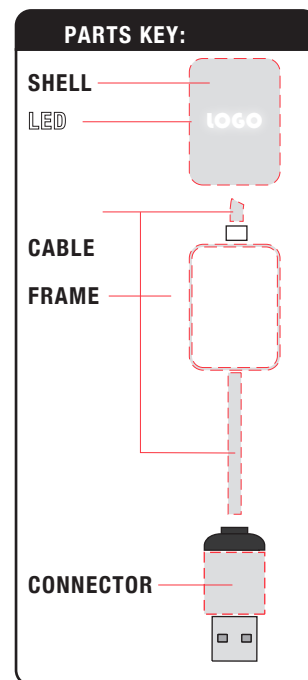
Front  
 Engrave Safe Size:   
 20 x 20 mm

LED Safe Size:   
 16 x 16 mm



Engrave  
 (Light Up Logo)

|                  | Black/Silver    |
|------------------|-----------------|
| <b>SHELL</b>     | <b>black</b>    |
| <b>FRAME</b>     | <b>silver</b>   |
| <b>LED</b>       | <b>white</b>    |
| <b>CABLE</b>     | <b>black</b>    |
| <b>CONNECTOR</b> | <b>silver</b>   |
| <b>FINISH</b>    | <b>UV Gloss</b> |



Please follow these artwork guidelines: • Use and supply vector-based artwork • Illustrator compatible EPS or PDF with all fonts outlined • Indicate any critical colour details with the correct PMS colour • All Pantone colours need to be supplied as Pantone Coated (PMS C) colours • All details need to be “embedded” in the file, i.e. no linked artwork should be provided • Bleed is crucial when printing edge to edge. Artwork must extend beyond the finished and trim size dimensions.

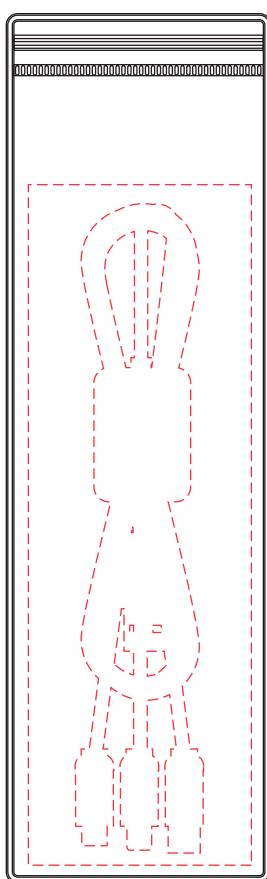
**AR879**

**Fierra 3n1 Light Up Charge Cable**

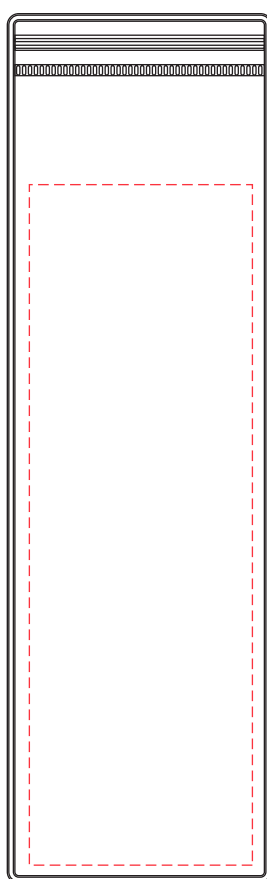
**Print Process:** Light-Up Logo

**Product Size:** Cable Head: 38 x 26 mm, Cable Length: 100 cm

**Colours:** Product Colour: Black/Silver & White (LED). Refer to our PDF template.

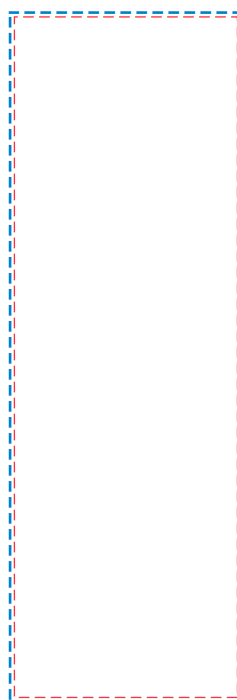


Front  
 Print : 59 x 180 mm  
 4 Colour Process  
 (Allow 3 mm Bleed)

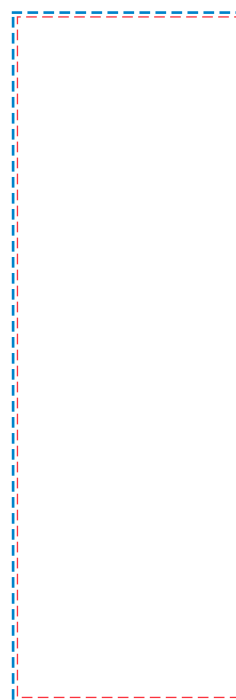


Rear  
 Print : 59 x 180 mm  
 4 Colour Process  
 (Allow 3 mm Bleed)

Pouch 70 x 230 mm



Front Insert  
 Print : 59 x 180 mm --  
 4 Colour Process  
 3 mm Bleed --



Rear Insert  
 Print : 59 x 180 mm --  
 4 Colour Process  
 3 mm Bleed --



Please follow these artwork guidelines: • Use and supply vector-based artwork • Illustrator compatible EPS or PDF with all fonts outlined • Indicate any critical colour details with the correct PMS colour • All Pantone colours need to be supplied as Pantone Coated (PMS C) colours • All details need to be “embedded” in the file, i.e. no linked artwork should be provided • Bleed is crucial when printing edge to edge. Artwork must extend beyond the finished and trim size dimensions.

**AR879**

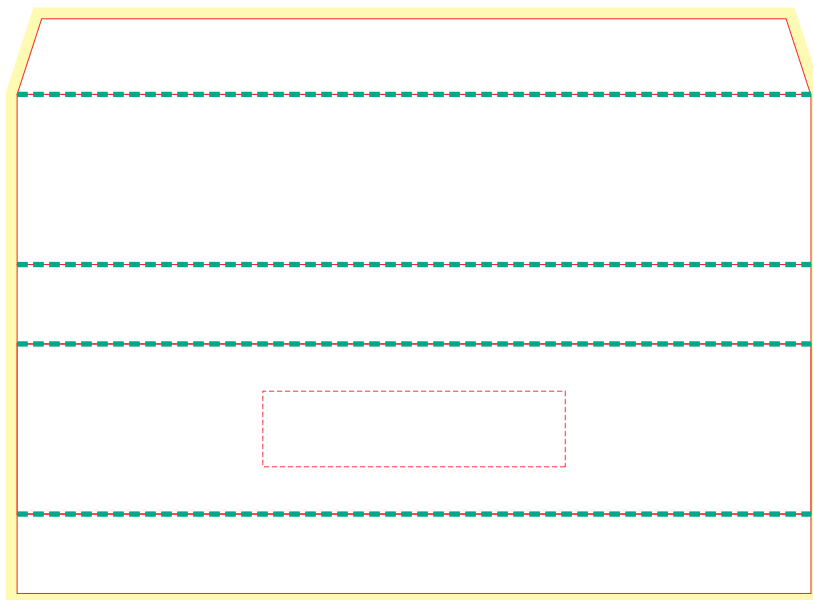
**Fierra 3n1 Light Up Charge Cable**

**Print Process:** Light-Up Logo

**Product Size:** Cable Head: 38 x 26 mm, Cable Length: 100 cm

**Colours:** Product Colour: Black/Silver & White (LED). Refer to our PDF template.

**Box Sleeve**



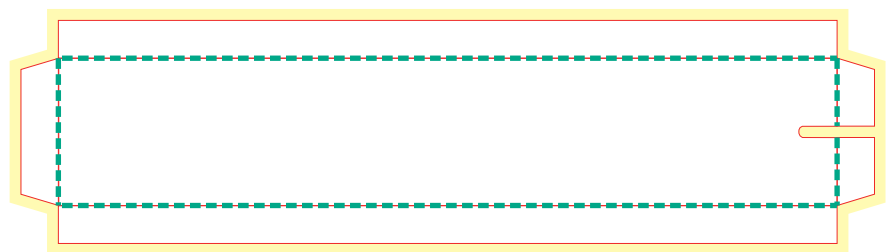
Custom Box Sleeve  
 210mm x 45mm x 21mm  
 4CP Print

Box Sleeve Front  
 Print : 80 x 20mm  
 Foil Stamping



— Dye Line  
 — Bleed (3mm)  
 - - - Folds

**Tray Inset**



Custom Tray Inset  
 206mm x 39mm  
 4CP Print



Please follow these artwork guidelines: • Use and supply vector-based artwork • Illustrator compatible EPS or PDF with all fonts outlined • Indicate any critical colour details with the correct PMS colour • All Pantone colours need to be supplied as Pantone Coated (PMS C) colours • All details need to be “embedded” in the file, i.e. no linked artwork should be provided • Bleed is crucial when printing edge to edge. Artwork must extend beyond the finished and trim size dimensions.