

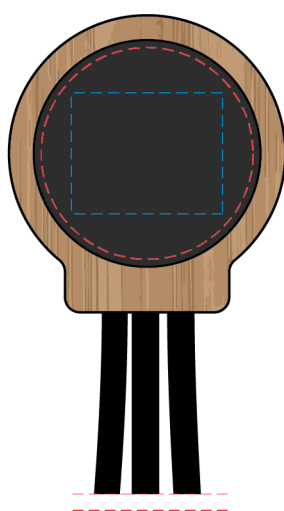
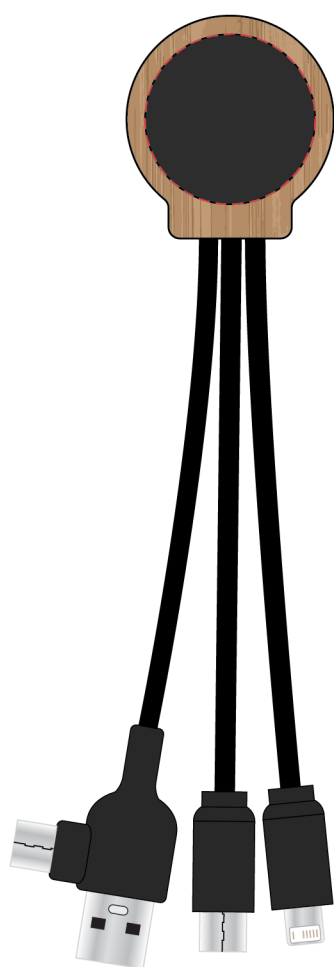
AR942

Sabre LED Charge Cable

Branding Options: Engraved Light-Up Logo, Pad Print, 4CP Digital Print

Product Size: 36 dia. x 9.8 x 165 mm

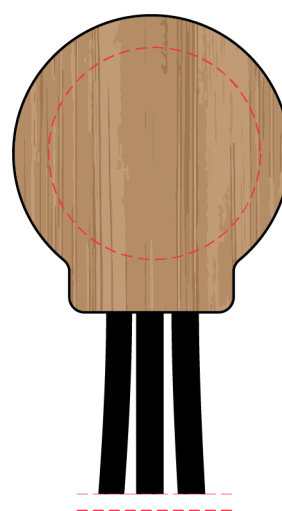
Colour: Product Colour: Black/Bamboo



Front

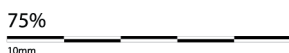
Branding : 28 mm Diameter
 4CP Digital, Pad Print

Branding : 20 x 20 mm (w x h)
 Light-Up Engrave



Rear

Branding : 28 mm Diameter
 4CP Digital, Pad Print



----- Extent of Branding
 (Not To Be Printed)

Please follow these artwork guidelines • Use and supply vector-based artwork • Illustrator compatible EPS or PDF with all fonts outlined • Indicate any necessary colour details with the correct PMS colour • All Pantone colours need to be supplied as Pantone Coated (PMS C) colours • All specifics need to be "embedded" in the file, i.e. no linked artwork should be provided • Bleed is crucial when printing edge to edge. Artwork must extend beyond the finished and trim size dimensions.

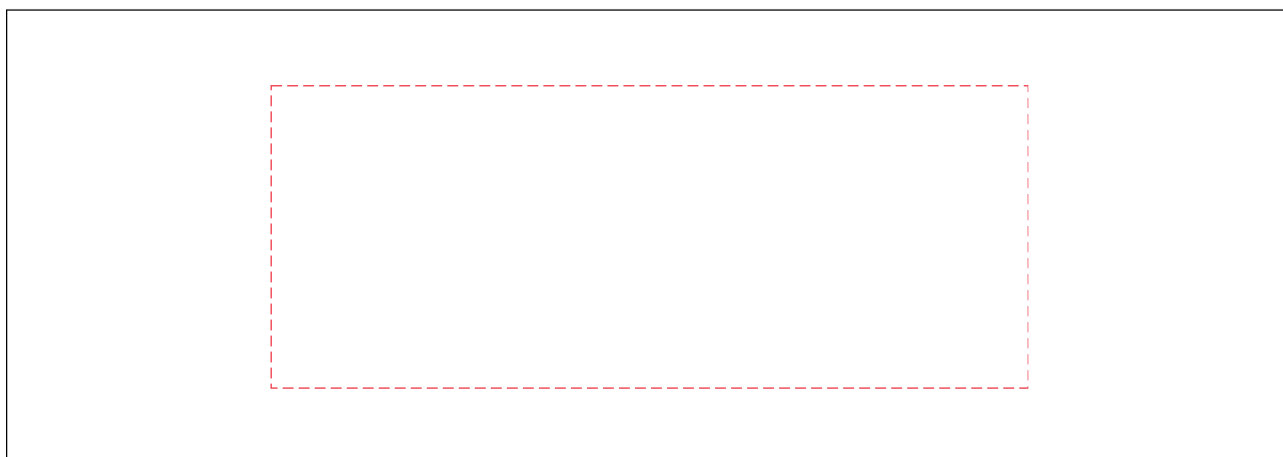
AR942

Sabre LED Charge Cable

Branding Options: Engraved Light-Up Logo, Pad Print, 4CP Digital Print

Product Size: 36 dia. x 9.8 x 165 mm

Colour: Product Colour: Black/Bamboo



Box Face

Branding : 100 x 40 mm (w x h)

1 Colour Print

PK057 - Kraft Tuck Box 1
Box Dimensions 170 x 60 x 12 mm



----- Extent of Branding
(Not To Be Printed)

Please follow these artwork guidelines • Use and supply vector-based artwork • Illustrator compatible EPS or PDF with all fonts outlined • Indicate any necessary colour details with the correct PMS colour • All Pantone colours need to be supplied as Pantone Coated (PMS C) colours • All specifics need to be "embedded" in the file, i.e. no linked artwork should be provided • Bleed is crucial when printing edge to edge. Artwork must extend beyond the finished and trim size dimensions.

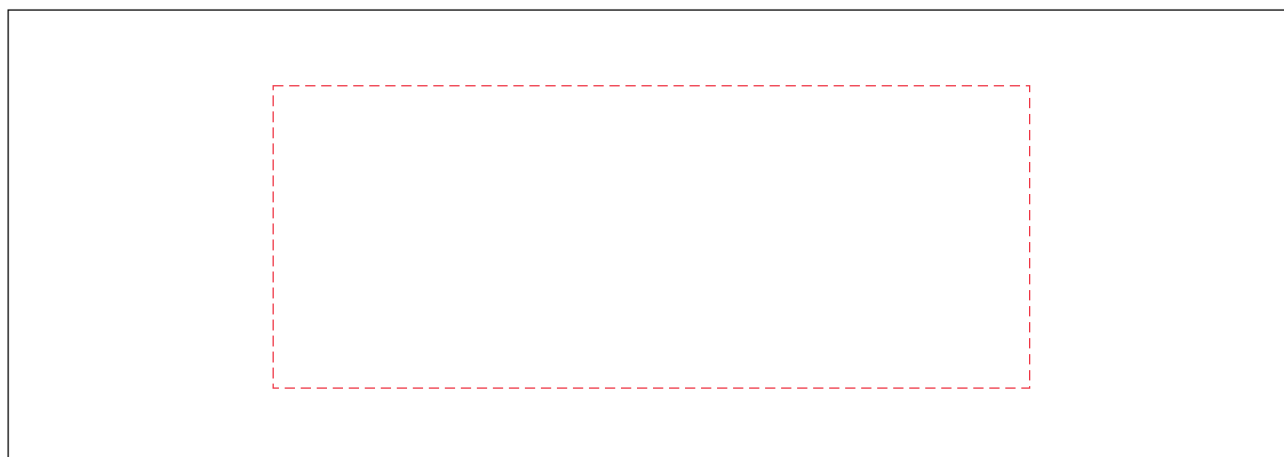
AR942

Sabre LED Charge Cable

Branding Options: Engraved Light-Up Logo, Pad Print, 4CP Digital Print

Product Size: 36 dia. x 9.8 x 165 mm

Colour: Product Colour: Black/Bamboo



Box Face

Branding : 100 x 40 mm (w x h)

1 Colour Print

PK058 - Kraft Sliding Gift Box 1
Box Dimensions 170 x 60 x 18 mm



----- Extent of Branding
(Not To Be Printed)

Please follow these artwork guidelines • Use and supply vector-based artwork • Illustrator compatible EPS or PDF with all fonts outlined • Indicate any necessary colour details with the correct PMS colour • All Pantone colours need to be supplied as Pantone Coated (PMS C) colours • All specifics need to be "embedded" in the file, i.e. no linked artwork should be provided • Bleed is crucial when printing edge to edge. Artwork must extend beyond the finished and trim size dimensions.

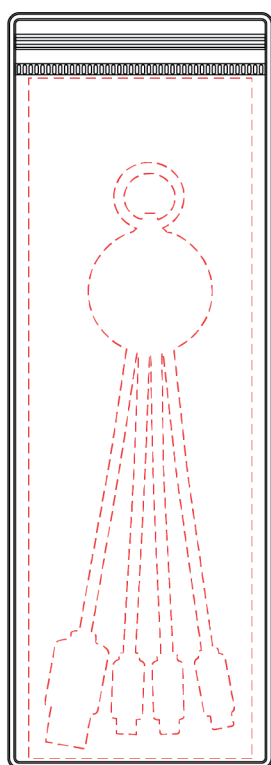
AR942

Sabre LED Charge Cable

Branding Options: Engraved Light-Up Logo, Pad Print, 4CP Digital Print

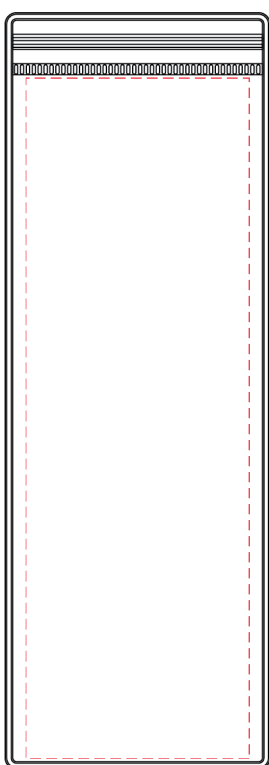
Product Size: 36 dia. x 9.8 x 165 mm

Colour: Product Colour: Black/Bamboo



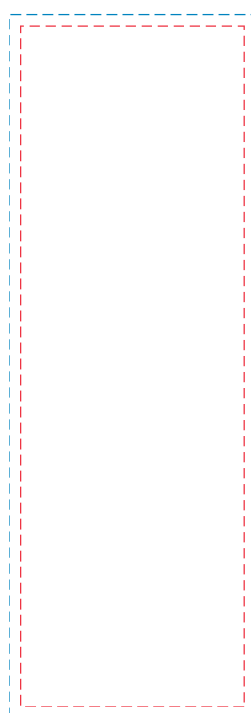
Front

Print : 59 x 180 mm
 4 Colour Process
 (Allow 3 mm Bleed)



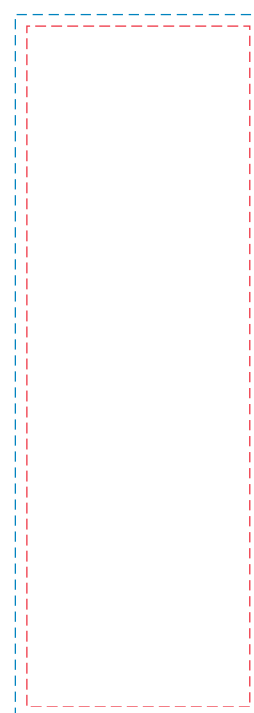
Rear

Print : 59 x 180 mm
 4 Colour Process
 (Allow 3 mm Bleed)



Front Insert

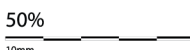
Print : 59 x 180 mm --
 4 Colour Process
 3 mm Bleed --



Rear Insert

Print : 59 x 180 mm --
 4 Colour Process
 3 mm Bleed --

PK038_1 Pouch
Pouch Dimensions 200 x 70 mm



Please follow these artwork guidelines • Use and supply vector-based artwork • Illustrator compatible EPS or PDF with all fonts outlined • Indicate any necessary colour details with the correct PMS colour • All Pantone colours need to be supplied as Pantone Coated (PMS C) colours • All specifics need to be "embedded" in the file, i.e. no linked artwork should be provided • Bleed is crucial when printing edge to edge. Artwork must extend beyond the finished and trim size dimensions.